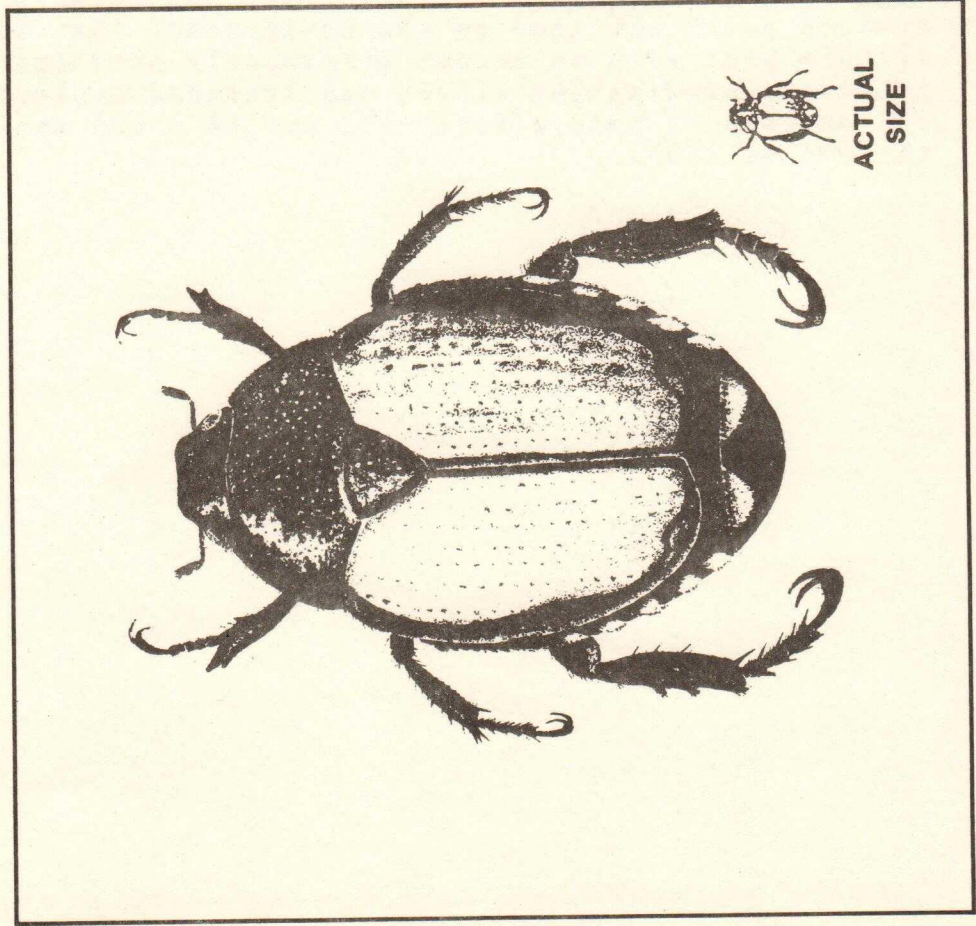
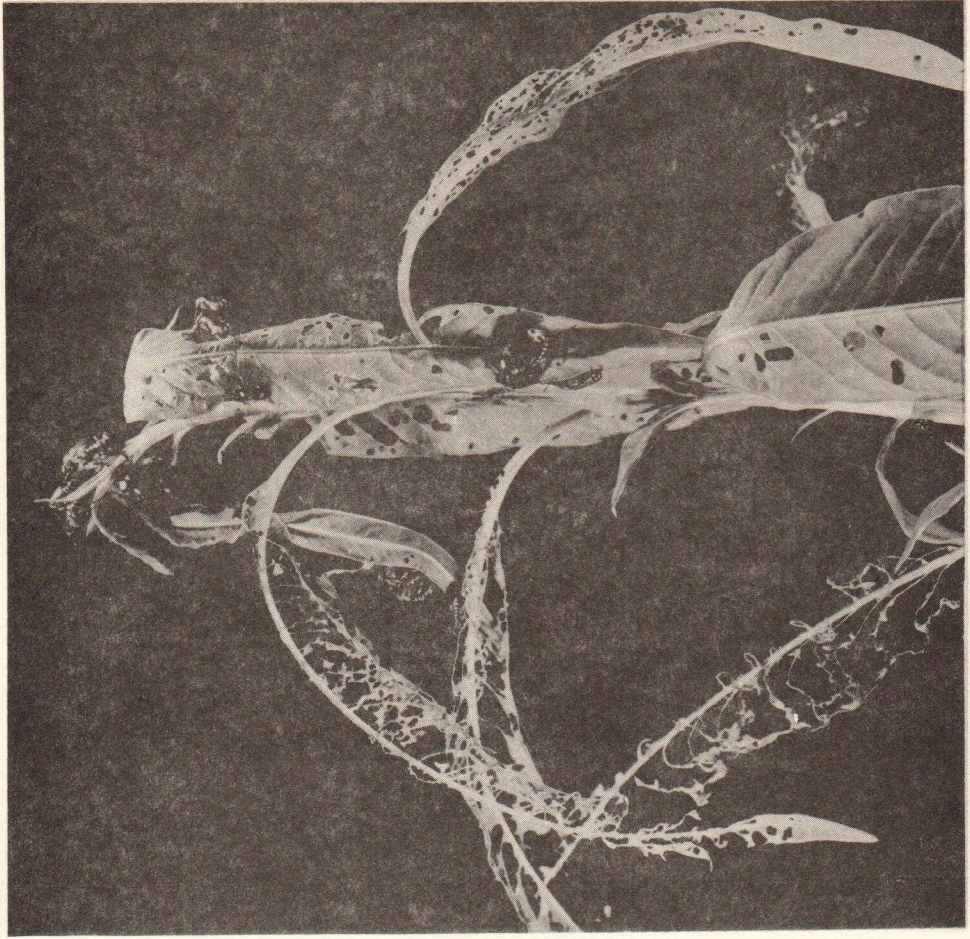


SACRAMENTO COUNTY AGRICULTURAL CROP AND LIVESTOCK REPORT

1983



JAPANESE BEETLE
(*Popillia Japonica*)



BEETLE DAMAGE ON PEACH

On June 30, 1983 two Japanese beetles were found in a trap in the Orangevale area of Sacramento County. Subsequent inspections uncovered an additional 30 beetles; thus confirming that, for the first since 1962, Sacramento County had an active Japanese beetle infestation.

The Japanese beetle, Popillia japonica Newman, is native to the main islands of Japan. It was first found in the U.S. in 1916 in a nursery near Riverton, New Jersey. The beetle is currently found in coastal and adjacent states from Maine to Alabama with spotty infestations westward to the Mississippi River.

Based on experience in the east where over 300 plants are attacked, it is expected that the Japanese beetle could do serious damage to agriculture and urban landscaping in California. Because of this threat, and because of the increased pesticide load on the environment that would result if this pest were to become permanently established, an intensive eradication effort was launched against the beetle. The success of this effort will not be known until at least the end of 1986.



COUNTY OF SACRAMENTO

W. LELAND BROWN
AGRICULTURAL COMMISSIONER
DIRECTOR OF WEIGHTS AND MEASURES

4137 BRANCH CENTER ROAD • SACRAMENTO, CALIFORNIA 95827
TELEPHONE: (916) 366-2003

April 1, 1984

CLARE BERRYHILL, Director
California Department of Food & Agriculture

THE HONORABLE BOARD OF SUPERVISORS
Sacramento County

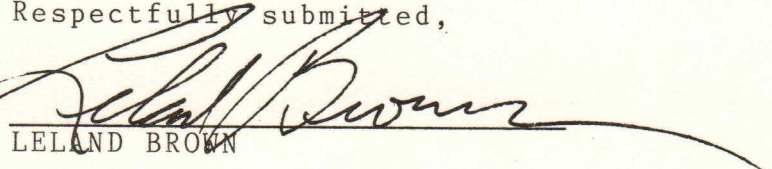
Even though the cost of growing food continues to rise, the estimated gross value of agricultural production in Sacramento County during 1983 was \$167,772,000. This figure is down 7.8% from the previous year and 24% less than the record value set during 1980.

Continued low farm prices, unfavorable weather, and the PIK program contributed to the reduced farm value. The PIK program resulted in a significant reduction in value of field crops. For example; the acreage of field corn was down by 14,000 acres, while rice and wheat were both down by 11,000 acres.

Pears were down in value by \$2,600,000 because of adverse weather and lower prices; while canning tomatoes dropped in value by nearly \$3,000,000 because of reduced acreage and lower prices. The value of cattle and calves was down by \$2,300,000 because fewer cattle were sold, and the price declined from the previous year.

Although the overall value of farm production was down in 1983, a few individual commodities increased in value. The County's replacement pullet industry increased by \$871,000 to edge out wine grapes as the County's 10th leading commodity; for the second year, the price of asparagus increased, resulting in a value of \$3,402,000, up \$1,842,000 (118%) from just two years ago.

Respectfully submitted,


LELAND BROWN

SACRAMENTO OFFICE

SACRAMENTO COUNTY

DEPARTMENT OF AGRICULTURE

W. LELAND BROWN

Agricultural Commissioner

ANNUAL CROP REPORT

For Year 1983

Compiled by

KEITH E. MILLER

Deputy Agricultural Commissioner

BOARD OF SUPERVISORS

| | |
|--------------------------|------------|
| TED SHEEDY | DISTRICT 1 |
| ILLA COLLIN | DISTRICT 2 |
| SANDRA R. SMOLEY | DISTRICT 3 |
| BILL BRYAN | DISTRICT 4 |
| C. TOBIAS (TOBY) JOHNSON | DISTRICT 5 |

P E R S O N N E L

SACRAMENTO OFFICE

W. LELAND BROWN, Agricultural Commissioner
JAMES E. COX, Deputy County Agricultural Commissioner
KEITH E. MILLER, Deputy County Agricultural Commissioner
ANTONIO J. ALVAREZ, Deputy County Agricultural Commissioner

AGRICULTURAL BIOLOGISTS

DONALD W. ADAMS C. JAMES RASMUSSEN
JULI D. JENSEN MERLE SCRIBNER
CHARLES A. MELLOR PHILLIP H. SIEBERT
RONALD T. OTSUJI

GALT OFFICE

DEBORAH THOMPSON

WALNUT GROVE OFFICE

E. ROY ANDERSON

CLERICAL

RIGENE MANNING

Department Secretary

CHERYL E. MOSCHKE LINDA OKAWARA
Typist Clerk II Typist Clerk II

THE TEN LEADING FARM COMMODITIES - 1983

| | | |
|-----|---------------------|---------------|
| 1. | MILK | \$ 39,000,000 |
| 2. | CORN | 22,500,000 |
| 3. | CATTLE AND CALVES | 20,265,000 |
| 4. | PEARS | 9,850,000 |
| 5. | PROCESSED TOMATOES | 7,473,000 |
| 6. | RICE | 6,356,000 |
| 7. | WHEAT | 5,520,000 |
| 8. | ALFALFA | 4,704,000 |
| 9. | CORN, SILAGE | 3,838,000 |
| 10. | REPLACEMENT PULLETS | 3,555,000 |

SUMMARY OF PRODUCTION

| | <u>1983</u> | <u>Value of Production</u> | <u>1982</u> | <u>Value of Production</u> |
|--------------------------|-------------|----------------------------|-------------|----------------------------|
| Field Crops | 1 | \$ 55,381,000 | 1 | \$ 65,005,000 |
| Livestock & Poultry Pro. | 2 | 40,484,000 | 2 | 39,924,000 |
| Livestock & Poultry | 3 | 27,509,000 | 3 | 27,771,000 |
| Nursery Products | 4 | 14,732,000 | 4 | 15,756,000 |
| Fruit & Nut Crops | 5 | 13,793,000 | 5 | 15,147,000 |
| Vegetable Crops | 6 | 12,082,000 | 6 | 14,367,000 |
| Seed Crops | 7 | 3,454,000 | 7 | 3,730,000 |
| Apiary | 8 | 337,000 | 8 | 285,000 |

GROSS VALUE OF AGRICULTURAL PRODUCTION 1973-1983

THE TEN LEADING FARM COMMODITIES - 1983

| Year | Gross Value (\$) | Commodity |
|------|------------------|-----------------------------|
| 1983 | 167,772,000 | 1. MILK |
| 1982 | 181,985,000 | 2. CATTLE AND CALVES |
| 1981 | 208,846,000 | 3. PEARLS |
| 1980 | 221,600,400 | 4. WHEAT |
| 1979 | 182,800,000 | 5. RICE |
| 1978 | 141,368,600 | 6. CORN, SHAGE |
| 1977 | 128,058,000 | 7. REPLACEMENT PULLETS |
| 1976 | 131,630,300 | 8. SUMMARY OF PRODUCTION |
| 1975 | 133,072,600 | 9. Value of Production 1983 |
| 1974 | 155,365,600 | 10. Field Crops |
| 1973 | 121,391,100 | Livestock & Poultry Pro. |
| | | Livestock & Poultry |
| | | Nursery Products |
| | | Fruit & Nut Crops |
| | | Vegetable Crops |
| | | Seed Crops |
| | | Aplary |

FIELD CROPS: ACREAGE, PRODUCTION AND VALUE 1982-83

| ITEM | YEAR | PRODUCTION | | | VALUE | | |
|-----------------------|------|----------------------|-------------|-----------|-------|-------------|------------|
| | | HARVESTED ACREAGE | PER ACRE | TOTAL | UNIT | PER UNIT | TOTAL |
| Barley | 1983 | - | - | - | - | - | - |
| | 1982 | 900 | 1.7 | 1,530 | TON | 105.00 | 161,000 |
| Beets, Sugar | 1983 | 1,800 | 21.0 | 39,000 | TON | 37.00 | 1,443,000 |
| | 1982 | 3,200 | 25.0 | 80,000 | TON | 32.00 | 2,560,000 |
| Corn, Field | 1983 | 45,000 | 4.0 | 180,000 | TON | 125.00 | 22,500,000 |
| | 1982 | 59,000 | 3.9 | 230,000 | TON | 102.00 | 23,460,000 |
| Corn, Silage | 1983 | 7,780 | 26.0 | 202,000 | TON | 19.00 | 3,838,000 |
| | 1982 | 7,740 | 25.0 | 194,000 | TON | 21.00 | 4,074,000 |
| Grain, Sorghum | 1983 | 3,000 | 2.6 | 7,800 | TON | 110.00 | 858,000 |
| | 1982 | 3,200 | 1.8 | 5,760 | TON | 87.00 | 501,000 |
| Hay, Alfalfa | 1983 | 6,400 | 7.0 | 44,800 | TON | 105.00 | 4,704,000 |
| | 1982 | 6,800 | 5.0 | 34,000 | TON | 93.00 | 3,162,000 |
| Hay, Grain | 1983 | 9,200 | 3.0 | 27,600 | TON | 60.00 | 1,656,000 |
| | 1982 | 10,700 | 2.5 | 26,800 | TON | 40.00 | 1,072,000 |
| Hay, Other | 1983 | 8,200 | 2.0 | 16,400 | TON | 40.00 | 656,000 |
| | 1982 | 9,400 | 2.0 | 18,800 | TON | 40.00 | 752,000 |
| Hops | 1983 | 500 | 1,600.0 | 800,000 | LBS | 1.90 | 1,520,000 |
| | 1982 | 580 | 1,900.0 | 1,102,000 | LBS | 1.75 | 1,928,000 |
| Peas | 1983 | 980 | 1.0 | 980 | TON | 135.00 | 132,000 |
| | 1982 | 890 | .9 | 801 | TON | 120.00 | 96,000 |
| Pasture, Irrigated | 1983 | 33,000 | | | ACRE | 100.00 | 3,300,000 |
| | 1982 | 35,000 | | | ACRE | 100.00 | 3,500,000 |
| Range | 1983 | 98,000 | | | ACRE | 8.00 | 784,000 |
| | 1982 | 104,000 | | | ACRE | 8.00 | 832,000 |
| Rice | 1983 | 12,600 | 3.6 | 45,400 | TON | 140.00 | 6,356,000 |
| | 1982 | 23,600 | 3.5 | 82,600 | TON | 140.00 | 11,564,000 |
| Safflower | 1983 | 3,800 | 1.6 | 6,080 | TON | 235.00 | 1,429,000 |
| | 1982 | 3,500 | 1.5 | 5,250 | TON | 270.00 | 1,417,000 |
| Wheat | 1983 | 20,000 | 2.3 | 46,000 | TON | 120.00 | 5,520,000 |
| | 1982 | 31,000 | 2.4 | 74,400 | TON | 124.00 | 9,226,000 |
| Misc. Field ** | 1983 | 1,370 | | | | | 685,000 |
| | 1982 | 1,400 | | | | | 700,000 |
| TOTAL | 1983 | 251,630 | | | | | 55,381,000 |
| | 1982 | 300,910 | | | | | 65,005,000 |

**Includes Dry Beans, Sunflower, Popcorn, and Wild Rice.

NURSERY PRODUCTS: PRODUCTION AREA AND VALUE, 1982-83

| ITEM | YEAR | HARVESTED ACREAGE | TOTAL |
|---------|------|----------------------|--------------|
| Nursery | 1983 | 660 | \$14,732,000 |
| | 1982 | 680 | 15,756,000 |

VEGETABLE CROPS: ACREAGE, PRODUCTION AND VALUE, 1982-83

| ITEM | YEAR | PRODUCTION | | TOTAL | UNIT | VALUE | |
|------------------------|------|----------------------|-------------|---------|------|-------------|-------------|
| | | HARVESTED ACREAGE | PER ACRE | | | PER UNIT | TOTAL |
| Asparagus | 1983 | 1,350 | 1.8 | 2,430 | Ton | 1,400.00 | \$3,402,000 |
| | 1982 | 1,430 | 2.1 | 3,000 | Ton | 940.00 | 2,820,000 |
| Cabbage | 1983 | 26 | 15.0 | 390 | Ton | 210.00 | 82,000 |
| | 1982 | 33 | 16.0 | 528 | Ton | 170.00 | 90,000 |
| Lettuce, Head/Leaf | 1983 | 28 | 6.0 | 168 | Ton | 450.00 | 76,000 |
| | 1982 | 31 | 6.0 | 186 | Ton | 440.00 | 82,000 |
| Squash | 1983 | 53 | 13.0 | 689 | Ton | 230.00 | 158,000 |
| | 1982 | 55 | 12.5 | 688 | Ton | 235.00 | 162,000 |
| Tomatoes, Fresh | 1983 | 18 | 26.0 | 468 | Ton | 450.00 | 211,000 |
| | 1982 | 28 | 23.0 | 644 | Ton | 410.00 | 264,000 |
| Tomatoes, Processed | 1983 | 5,420 | 26.0 | 141,000 | Ton | 53.00 | 7,473,000 |
| | 1982 | 7,800 | 24.0 | 187,000 | Ton | 56.00 | 10,472,000 |
| Miscellaneous* | 1983 | 420 | | | | | 680,000 |
| | 1982 | 790 | | | | | 474,000 |
| TOTAL | 1983 | 7,315 | | | | | 12,082,000 |
| | 1982 | 10,167 | | | | | 14,367,000 |

* Sweet corn, pepper, eggplant, chinese vegetables, green onion, bean sprouts

APIARY PRODUCTS: VALUE, 1982-83

| ITEM | YEAR | TOTAL |
|------------------|------|---------|
| Apiary Products* | 1983 | 337,000 |
| | 1982 | 285,000 |

*Includes Honey, Pkg. Bees, Queen Wax

FRUIT AND NUT CROPS: ACREAGE, PRODUCTION AND VALUE, 1982-83

| ITEM | YEAR | PRODUCTION | | | VALUE | | |
|---------------|------|-------------------|----------|---------|-------|----------|--------------|
| | | HARVESTED ACREAGE | PER ACRE | TOTAL | UNIT | PER UNIT | TOTAL |
| Grapes, Wine | 1983 | 3,610 | 5.6 | 20,200 | Ton | 170.00 | 3,434,000 |
| | 1982 | 3,410 | 3.0 | 10,200 | Ton | 180.00 | 1,836,000 |
| PEARS | | | | | | | |
| Bartlett | 1983 | 6,630 | 14.5 | 96,000 | Ton | | 9,850,000 |
| | 1982 | 6,660 | 15.3 | 102,000 | Ton | | 12,495,000 |
| Processed | 1983 | | | 83,500 | Ton | 100.00 | (8,350,000) |
| | 1982 | | | 85,000 | Ton | 120.00 | (10,200,000) |
| Fresh | 1983 | | | 12,500 | Ton | 120.00 | (1,500,000) |
| | 1982 | | | 17,000 | Ton | 135.00 | (2,295,000) |
| Walnuts | 1983 | 410 | 1.0 | 410 | Ton | 680.00 | 279,000 |
| | 1982 | 410 | 1.2 | 492 | Ton | 1,100.00 | 541,000 |
| Miscellaneous | 1983 | 190 | | | | | 230,000 |
| | 1982 | 270 | | | | | 275,000 |
| <hr/> | | | | | | | |
| TOTAL | 1983 | 10,840 | | | | | 13,793,000 |
| | 1982 | 10,750 | | | | | 15,147,000 |

SEED CROPS: ACREAGE, PRODUCTION AND VALUE, 1982-83

| ITEM | YEAR | PRODUCTION | | | VALUE | | |
|--------------------------|------|-------------------|----------|-----------|-------|----------|-----------|
| | | HARVESTED ACREAGE | PER ACRE | TOTAL | UNIT | PER UNIT | TOTAL |
| Clover, Ladino Certified | 1983 | 2,660 | 365.0 | 971,000 | Lbs | 1.35 | 1,311,000 |
| | 1982 | 2,520 | 350.0 | 882,000 | Lbs | 1.35 | 1,191,000 |
| Oats | 1983 | 400 | 1.0 | 400 | Ton | 140.00 | 56,000 |
| | 1982 | 500 | 1.0 | 500 | Ton | 170.00 | 85,000 |
| Rice | 1983 | 780 | 3.5 | 2,730 | Ton | 180.00 | 491,000 |
| | 1982 | 1,680 | 2.5 | 4,200 | Ton | 170.00 | 714,000 |
| Sudan, Certified | 1983 | 2,460 | 2,600.0 | 6,396,000 | Lbs | .12 | 768,000 |
| | 1982 | 3,200 | 2,200.0 | 7,040,000 | Lbs | .13 | 915,000 |
| Sudan, Hybrid | 1983 | 290 | 3,100.0 | 899,000 | Lbs | .15 | 135,000 |
| | 1982 | 490 | 2,900.0 | 1,421,000 | Lbs | .17 | 242,000 |
| Wheat | 1983 | 810 | 2.0 | 1,620 | Ton | 140.00 | 227,000 |
| | 1982 | 774 | 2.0 | 1,548 | Ton | 180.00 | 279,000 |
| Miscellaneous** | 1983 | 1,165 | | | | | 466,000 |
| | 1982 | 760 | | | | | 304,000 |
| <hr/> | | | | | | | |
| TOTAL | 1983 | 8,565 | | | | | 3,454,000 |
| | 1982 | 9,924 | | | | | 3,730,000 |

**Includes Alfalfa, Beans and Vegetables.

LIVESTOCK AND POULTRY: PRODUCTION AND VALUE, 1982-83

| ITEM | YEAR | PRODUCTION | | | VALUE | |
|---------------------|------|-------------|------------------|------|----------|---------------|
| | | NO. OF HEAD | TOTAL LIVEWEIGHT | UNIT | PER UNIT | TOTAL |
| Cattle & Calves | 1983 | 54,300 | 386,000 | CWT | 52.50 | \$ 20,265,000 |
| | 1982 | 61,100 | 426,000 | CWT | 53.00 | 22,578,000 |
| Sheep & Lambs | 1983 | 10,500 | 10,500 | CWT | 56.00 | 588,000 |
| | 1982 | 11,000 | 11,000 | CWT | 56.00 | 616,000 |
| Hogs & Pigs | 1983 | 800 | 1,600 | CWT | 52.00 | 83,000 |
| | 1982 | 900 | 1,800 | CWT | 58.00 | 104,000 |
| Broilers & Fryers | 1983 | 1,193,000 | 4,772,000 | LBS | .33 | 1,575,000 |
| | 1982 | 750,000 | 2,625,000 | LBS | .33 | 866,000 |
| Other Chickens | 1983 | - | - | | - | - |
| | 1982 | 32,000 | 128,000 | LBS | .07 | 9,000 |
| <hr/> | | | | | | |
| Replacement Pullets | 1983 | 711,000 | | EACH | 5.00 | 3,555,000 |
| | 1982 | 671,000 | | EACH | 4.00 | 2,684,000 |
| Other Livestock* | 1983 | | | | | 1,443,000 |
| | 1982 | | | | | 914,000 |
| <hr/> | | | | | | |
| TOTAL | 1983 | | | | | 27,509,000 |
| | 1982 | | | | | 27,771,000 |

*Includes: Turkeys - Hatchery-Rabbits, Catfish ** & Manure **
Stewing Hens

**Previously Not Reported

LIVESTOCK AND POULTRY PRODUCTS: PRODUCTION AND VALUE, 1982-83

| ITEM | YEAR | PRODUCTION | UNIT | VALUE | |
|--------------------|------|------------|------|----------|------------|
| | | | | PER UNIT | TOTAL |
| Milk - Market | 1983 | 2,816,000 | CWT | 12.90 | 36,326,000 |
| | 1982 | 2,761,000 | CWT | 13.20 | 36,445,000 |
| Milk Manufacturing | 1983 | 221,000 | CWT | 12.10 | 2,674,000 |
| | 1982 | 174,000 | CWT | 12.40 | 2,158,000 |
| Wool | 1983 | 100,000 | LBS | .65 | 65,000 |
| | 1982 | 110,000 | LBS | .70 | 77,000 |
| Eggs, Market | 1983 | 2,580,000 | DOZ | .55 | 1,419,000 |
| | 1982 | 2,392,000 | DOZ | .52 | 1,244,000 |
| <hr/> | | | | | |
| TOTAL | 1983 | | | | 40,484,000 |
| | 1982 | | | | 39,924,000 |

JANUARY 1 INVENTORIES OF LIVESTOCK

(In Number of Head)

| <u>ITEM</u> | <u>JANUARY, 1983</u> | <u>JANUARY, 1984</u> |
|---------------------|----------------------|----------------------|
| All Cattle & Calves | 120,000 | 102,000 |
| Cows, Dairy | 20,000 | 21,200 |
| Cows, Beef | 29,000 | 19,000 |
| Stock Sheep & Lambs | 10,500 | 11,000 |
| Hogs | 900 | 800 |